

Sage MAS 500 ERP



Available Modules

Sage MAS 500 ERP is a highly reliable, robust, and integrated series of enterprise applications covering all areas of business, including financials, distribution, customer relationship management (CRM), manufacturing, human resources, payroll, project accounting, financial reporting, electronic commerce, and more.

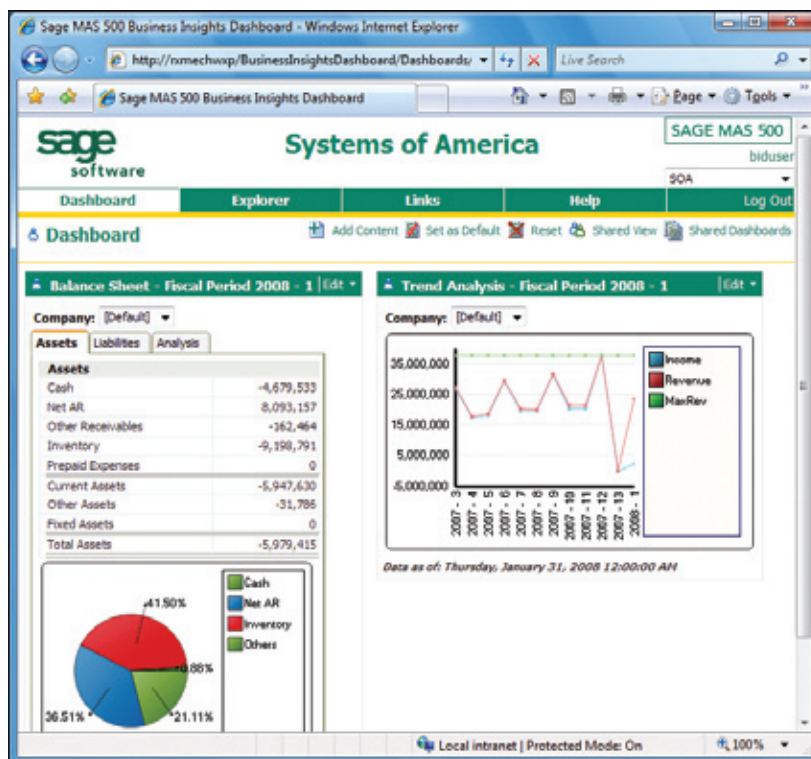
The products are designed exclusively for growing mid-market companies and leverage Microsoft® tools, technology, and architecture to provide a flexible, scalable, and full-featured enterprise management solution.

Sage MAS 500 offers award-winning functionality in a variety of areas. Extensive distribution capabilities support multiple warehouses, forecasting, and automated procurement. The comprehensive manufacturing capabilities include routings, bills of material, work orders, MRP, scheduling, job costing, and labor reporting. Powerful business intelligence and reporting capabilities help you gain insights into your business and make informed decisions quickly, decisively, and confidently.

In addition, Sage MAS 500 can easily be integrated with other applications, including websites and e-commerce applications, allowing customers to fully support their e-business plans with Sage MAS 500. These strengths combine with many others to provide a complete accounting and business management solution.

SOLUTIONS

- Financials
- Project Accounting
- Distribution
- Manufacturing
- CRM
- E-business
- HR
- Payroll
- Business Intelligence and Reporting
- Customization and Integration



- Business Insights Dashboard uses .NET technology to instantly give you a comprehensive view of critical business information that can be customized for each user's preference.



“Sage MAS 500 gives us the ability to manage our finances exactly the way we want, controlling the reporting process within our own department—and trimming costs in accounting by increasing our speed and effectiveness.”

Mike Davis
Controller
Market Day Corporation

Financials

Sage MAS 500 offers deep financial functionality and superior usability. Integration of multiple processes, easy access, data error reduction, and streamlined customization are only a few of the benefits of Sage MAS 500 financial software. Integration with Microsoft Office and the Internet, combined with its exclusive optimization for the Windows® and SQL Server® platform, makes it an ideal solution for the ever-changing needs of today's growing businesses. The Sage MAS 500 Financials include:

General Ledger, Accounts Receivable, Accounts Payable, Purchase Order, Multicurrency Management, Cash Management, FAS Asset Accounting, FAS Asset Inventory, Allocations, Budgeting, and Financial Reporting.

These modules can improve your cash flow, customer satisfaction, and access to up-to-the-minute data. They also offer a way to streamline your accounting processes, save time, increase the integrity of your data, and provide the means for instant analysis and presentation-quality reporting on a host of important issues that affect your decision-making and profitability.

Project Accounting

Effective project management enables professional services firms and corporate IT departments to achieve operational excellence through the unique ability to control people, projects, and budgets with exceptional flexibility. The result helps generate more revenue at a lower cost, eliminates wasted hours, and produces greater bottom-line savings.

The Sage MAS 500 Project Accounting module allows project managers to optimize project profitability. Project managers can track actual vs. estimated costs through forecast completion, which helps prevent cost overruns and generates bottom-line savings. The Sage TimeSheet module is a browser-based time and expense entry and project cost management module that connects a remote workforce through the Internet in real-time.

Distribution

In today's distribution environment, many factors can jeopardize your profitability. Optimizing inventory levels can mean the difference between improving profits and going out of business. The Sage MAS 500 Distribution solution is an integrated series of modules designed to give you everything you need to control your inventory levels—and their effect on your profits. Incorporating Inventory Management, Inventory Replenishment, Warehouse Management, Sales Order, Purchase Order, eOrder, eCustomer,

Credit Card Processing, and Advanced Kitting modules, you can customize your software system to fit your specific requirements. Accurately forecasting and managing for every eventuality, the Distribution solution is ideal for distributors with multiple warehouses in a variety of industries.

Designed by distribution experts, Distribution can ensure on-time delivery to your important customers, maximize your productivity, and deliver advanced capabilities for tracking, managing, and replenishing inventory throughout the entire distribution cycle—from automated purchasing to stocking, all the way through to sales. With an eye on improving your profitability, the system helps you reduce carrying costs, maximize cash flow, and enables you to buy smarter.

Manufacturing

The Sage MAS 500 Manufacturing solution was designed with the flexibility and expanded capabilities to handle unique business requirements for various industries, including metal fabrication, machine and equipment manufacturing, electronic or electric equipment assembly, high-tech products, stamping, injection molding, furniture and fixture production, wood products manufacturing, and more.

Fully integrated modules can help you optimize your processes and secure your profit margin by tying manufacturing data back to the core financial modules that serve as the base of the Sage MAS 500 system. Manufacturing modules consist of Light Manufacturing, Advanced Manufacturing, Material Requirements Planning (MRP), Estimating, Engineering Change Management, Shop Floor Control, Advanced Planning and Scheduling, Product Configurator, and Project Management.

The manufacturing solution offers streamlined integration of routings and bills of material, which enable improved lead-time calculations, more accurate material plans, and better resource allocation. The solution gives a real-time business snapshot, a critical competitive advantage that provides manufacturers with the ability to ship more products on time to their customers, making it the clear choice for manufacturing management.

HR and Payroll

Sage Abra HR and Payroll deliver a powerful, yet flexible, enterprise-wide HR solution for managing employee and business relationships and overseeing the processes related to government compliance requirements and certifications.

The modules offered include Abra HR, Abra Payroll, and Abra Attendance, which smoothly integrate HR and payroll information with the many facets of your business operations.

“Sage MAS 500 is an excellent product with great functionality. All the modules integrate in a logical progression that makes a lot of sense to an accounting professional.”

Shawn Burke
Assistant Controller
Captivate Network, Inc.

CRM

Sage SalesLogix for Sage MAS 500 provides the tools to better understand your customers, close more deals, and help you profit from your relationships. By giving complete customer information to sales and support people, requests and leads from customers are managed effectively and accurately. By automating key activities, providing essential analytical tools, streamlining your company's communications, and managing intelligence, you can attain new levels of efficiency with benefits that range from improved employee teamwork and more satisfied customers to a shorter sales cycle, more sales revenue, and higher profitability. The Sage SalesLogix modules offered include: Sales, Marketing, and Customer Service.

Business Intelligence and Reporting

Sage MAS 500 provides other valuable system components that can offer substantial benefits in running your business by enabling you to monitor key performance indicators efficiently and effectively. Alerts can solve problems before they start and help you satisfy your customers far more consistently. Sage MAS 500 Alerts automatically send early warning email notifications to you and your specified personnel announcing critical events in your Sage MAS 500 system, including credit holds, inventory thresholds, priority client transactions, urgency levels, and more.

The Business Insights Dashboard module is included as standard with Sage MAS 500, and offers busy executives a customizable, web-based, real-time overview of vital business operations as well as user-defined key performance indicators. Using the data available in Sage MAS 500, your firm's senior staff can make better business-critical decisions in any environment with up-to-the-minute information.

Business Insights Explorer is one of the most convenient ways to keep up to date with current data on your sales, customers, inventory, projects, and other critical information. It brings ad hoc inquiry, drill-down, and drill-around analysis up to a whole new level. Turn your data into knowledge that you can act on by using powerful sorting, grouping, and filtering capabilities that you personalize to your specific needs and role within your company. Users also have the ability to export the detailed information displayed in Business Insights Explorer directly to an Excel® or Word template for additional report formatting, mail merging, and analysis.

Business Insights Analyzer can help you make better business decisions by providing you with insights into your business data. Business Insights Analyzer is an intuitive, easy-to-use analytics tool included with Sage MAS 500. Information is provided in a logical grid format with powerful filtering, grouping, and sorting capabilities that let you organize the data in the way most appropriate to the task at hand. You also have the added flexibility of analyzing each view using the included Excel PivotTables® and charts.

The screenshot shows the Sage MAS 500 Business Insights Explorer interface. The main content area displays a table of sales orders. The table has the following columns: Sales Order, SO Amt, SO Date, Status, Shipmnt, Open Amt, Cr Hold, and Hold. The data is grouped by customer.

Sales Order	SO Amt	SO Date	Status	Shipmnt	Open Amt	Cr Hold	Hold
Customer: (2)							
SO-000000211	0.00	6/30/2008	Open	Aff'd	0.00		
SO-000000218	0.00	6/30/2008	Open	Aff'd	0.00		
Customer: Abbott Workbooks (5)							
Customer: All-American, Inc. (30)							
SO-000000208	110.30	1/10/2008	Open	Aff'd	100.00		
SO-000000314	836.85	6/30/2008	Open	Aff'd	813.00		
SO-000000309	97.85	1/21/2008	Open	Aff'd	300.00		

With just a few clicks, Business Insights Explorer delivers quick and easy data inquiries, answers to “what if” scenarios, and last-minute must-have executive requests.

Customization

The Customizer module gives even novice programmers the ability to easily modify screens and forms to match specific business processes, look, and feel, and improve staff productivity without making changes to the source code. The Sage MAS 500 SDK provides faster development at lower costs through Visual Studio controls, wizards, and utilities that solve housekeeping issues, including concurrency, user interface, security models, and data handling. Module Source Code is available for purchase with the SDK and allows more complex enhancements and changes to be made.

Implementation Tools

Sage MAS 500 dramatically reduces implementation costs by providing an organized workflow of the steps required to configure the system combined with tools to facilitate the migration of data from your previous system. The configuration steps can be assigned to any user and integrated into Microsoft Outlook®. At each step, you can select whether to import data using powerful import utilities, load it from a spreadsheet, or copy information from an existing Sage MAS 500 company. Whatever your choice, the legacy data is validated as it is loaded into the system, ensuring the migration is smooth and complete.

Customers upgrading from Sage MAS 90 and Sage MAS 200 ERP systems can easily import data into Sage MAS 500 using Data Migrator, and have the added advantage of product-specific help for each migration step. The help information explains the differences between the two systems in terminology and functionality, assisting the customer in understanding the new system.

Data Import Manager puts you on the fast track to conversion and implementation. Built with .NET and SQL Server technology, this robust database integration tool lets you use a powerful mapping wizard to import data directly from sources such as Microsoft Access®, Excel, SQL Server, XML, and more.

Overall, Sage MAS 500 lowers the burden of switching enterprise systems, enabling you to focus your resources on the important task of leveraging Sage MAS 500 to help you save time, do more, and grow your business faster.

FINANCIALS

- General Ledger
- Accounts Receivable
- Accounts Payable
- Allocations
- Active Planner (Budgeting)
- Cash Management
- Sage FAS Asset Accounting
- Sage FAS Asset Inventory
- Multicurrency Management

PROJECT ACCOUNTING

- Project Accounting
- Sage TimeSheet

MANUFACTURING

- Light Manufacturing
- Advanced Manufacturing
- Advanced Planning & Scheduling
- Engineering Change Management
- Estimating
- Project Management
- Material Requirements Planning
- Product Configurator
- Shop Floor Control

CUSTOMIZATION

- SDK
- Customizer
- Source Code
- Data Import Manager
- Data Migrator

BUSINESS INTELLIGENCE AND REPORTING

- Alerts
- Business Insights Dashboard
- Business Insights Explorer
- Business Insights Analyzer
- Crystal Reports®

DISTRIBUTION

- Inventory Management
- Inventory Replenishment
- Purchase Order
- Sales Order
- Credit Card Processing
- eCustomer
- eOrder
- Warehouse Management
- Shipment Management
- Sales Tax
- RMA
- Advanced Kitting

HR AND PAYROLL

- Sage Abra Attendance
- Sage Abra HR
- Sage Abra Payroll

CRM

- Sage SalesLogix Sales
- Sage SalesLogix Customer Service
- Sage SalesLogix Marketing